



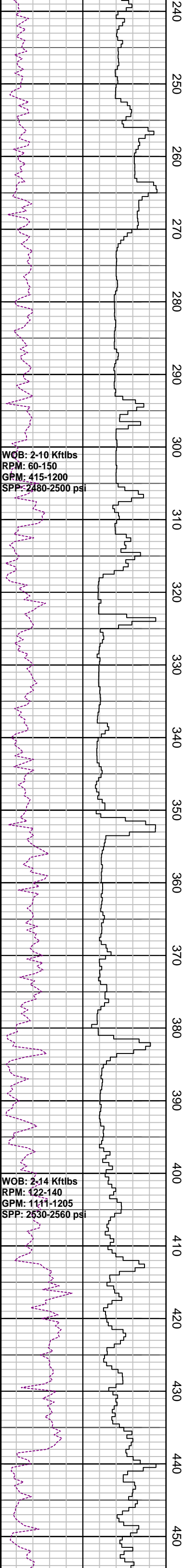
INTEQ

Company : Beach Petroleum Ltd  
Well : Fermat-1  
Interval : 62.00 - 1018.66 meters  
Created : 19/Dec/2008 6:27:29 AM



### FORMATION EVALUATION LOG

DRILLING PARAM ROP (m/hr) WEIGHT ON BIT (klbf)	MD meters 1:500	INTERPRETED LITHOLOGY	Oil Show P F G	LITHOLOGY %	CORE	TOTAL GAS	CHROMATOGRAPH	Calcimetry	Lithology Description
<p>RR1: 660 mm(26") X 914mm(36") H/Opener Make: Reed Type: Tricone Jets: 3 X 22, 1X16 Depth In: 76.7 m Depth Out: 119.0 m Drilled 42.3m in 3.2 hrs Grade: 1-1-NO-A-E-I-NO TD</p> <p>WOB: 4-6 Kftlbs RPM: 19-100 GPM: 335-1000 SPP: 100-900 psi</p> <p>Set 30" Casing at 116.0 m</p> <p>14/12/2008</p> <p>NB2: 444 mm(17-1/5") Make: Hughes/MXL-TOO Type: Milltooth Jets: 3 X 20 Depth In: 119.0 m Depth Out: 999.0 m Drilled 880m in 21.3 hrs Grade: 2-2-LT-G-E-I-LN-TD</p> <p>WOB: 2-6 Kftlbs RPM: 75-150 GPM: 565-1205 SPP: 465-2500 psi</p>	70 80 90 100 110 120 130 140 150 160 170 180 190 200 210 220 230								<p>Spud Fermat-1 @ 00:00 hrs on 14-Dec-2008</p> <p>RT-MSL: 38.0 mMDRT Water Depth: 38.7 mMDRT RT-Sea Bed 76.7 mMDRT</p> <p>914mm (36") Section TD @ 119.0m</p> <p>Drill with Sea water &amp; Hi-Vis sweeps, Returns to seabed</p> <p>MD: 167.75m Inc: 1.24° TVD: 167.74m Azi: 1.78°</p> <p>MD: 197.16m Inc: 0.28° TVD: 197.14m Azi: 58.77°</p> <p>Drill with Sea water &amp; Hi-Vis sweeps, Returns to seabed</p>



WOB: 2-10 Kftlbs  
 RPM: 60-150  
 GPM: 415-1200  
 SPP: 2480-2500 psi

WOB: 2-14 Kftlbs  
 RPM: 122-140  
 GPM: 1111-1205  
 SPP: 2530-2560 psi

MD: 256.53m	Inc: 0.60°
TVD: 256.51m	Azi: 153.58°

MD: 286.11m	Inc: 2.77°
TVD: 286.08m	Azi: 188.85°

Drill with Sea water & Hi-Vis sweeps,  
 Returns to seabed

MD: 315.55m	Inc: 1.66°
TVD: 315.5m	Azi: 227.88°

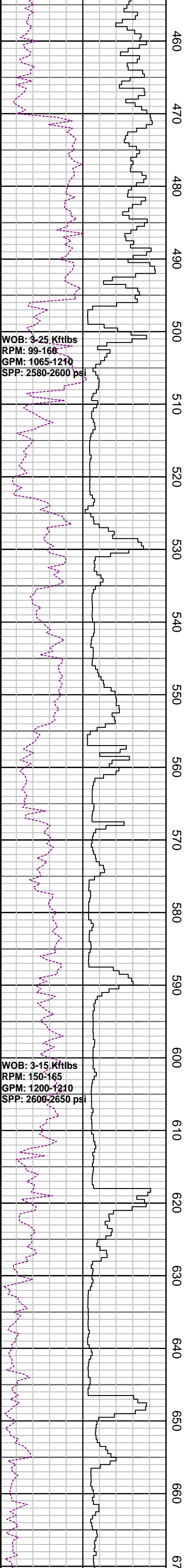
MD: 345.27m	Inc: 0.27°
TVD: 345.21m	Azi: 15.5°

Drill with Sea water & Hi-Vis sweeps,  
 Returns to seabed

MD: 374.62m	Inc: 0.25°
TVD: 374.56m	Azi: 25.51°

MD: 404.16m	Inc: 1.88°
TVD: 404.10m	Azi: 211.9°

Drill with Sea water & Hi-Vis sweeps,  
 Returns to seabed



WOB: 3-25 Kftlbs  
RPM: 99-166  
GPM: 1065-1210  
SPP: 2580-2600 psi

WOB: 3-15 Kftlbs  
RPM: 150-165  
GPM: 1200-1210  
SPP: 2600-2650 psi

MD: 463.95m Inc: 0.32°  
TVD: 463.88m Azi: 269.03°

MD: 493.39m Inc: 0.43°  
TVD: 493.32m Azi: 249.6°

MD: 523.07m Inc: 0.44°  
TVD: 523.00m Azi: 347.74°

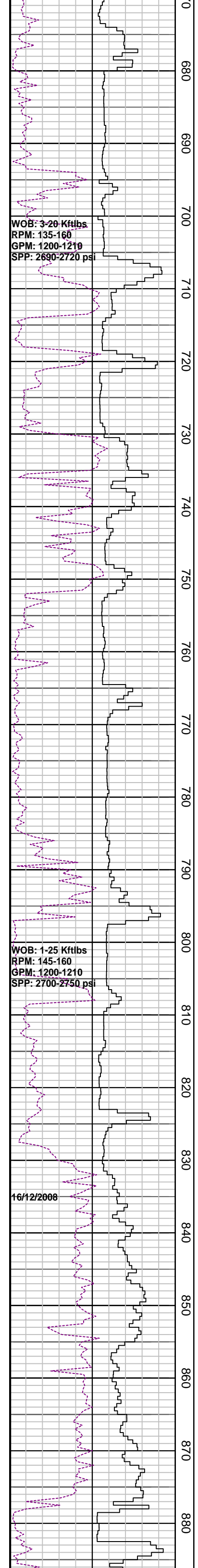
MD: 552.74m Inc: 0.22°  
TVD: 552.67m Azi: 270.06°

MD: 582.42m Inc: 0.09°  
TVD: 582.35m Azi: 29.68°

Drill with Sea water & Hi-Vis sweeps,  
Returns to seabed

MD: 611.99m Inc: 0.51°  
TVD: 611.92m Azi: 339.54°

MD: 641.4m Inc: 0.19°  
TVD: 641.32m Azi: 327.69°



WOB: 3-20 Kftlbs  
RPM: 135-160  
GPM: 1200-1210  
SPP: 2690-2720 psi

WOB: 1-25 Kftlbs  
RPM: 145-160  
GPM: 1200-1210  
SPP: 2700-2750 psi

16/12/2008

MD: 670.88m Inc: 0.49°  
TVD: 670.80m Azi: 288.55°

MD: 700.49m Inc: 0.33°  
TVD: 700.41m Azi: 247.33°

MD: 729.55m Inc: 0.46°  
TVD: 729.47m Azi: 275.90°

Drill with Sea water & Hi-Vis sweeps,  
Returns to seabed

MD: 759.18m Inc: 0.36°  
TVD: 759.10m Azi: 241.87°

MD: 788.76m Inc: 0.65°  
TVD: 788.68m Azi: 163.00°

MD: 818.32m Inc: 0.12°  
TVD: 818.24m Azi: 122.27°

MD: 848.13m Inc: 0.24°  
TVD: 848.05m Azi: 67.63°

MD: 877.69m Inc: 0.5°  
TVD: 877.61m Azi: 112.18°

